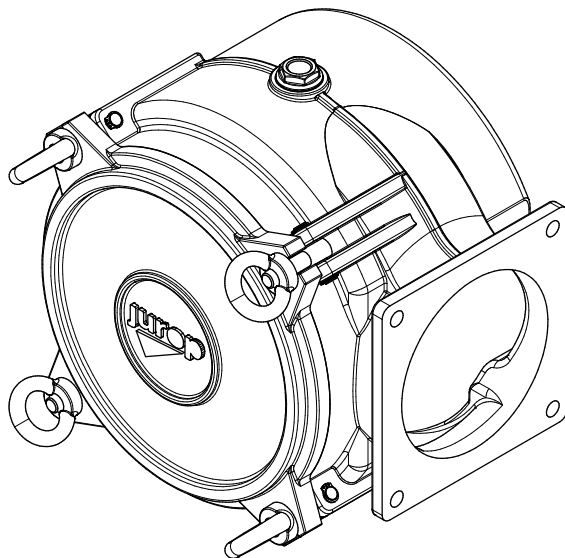
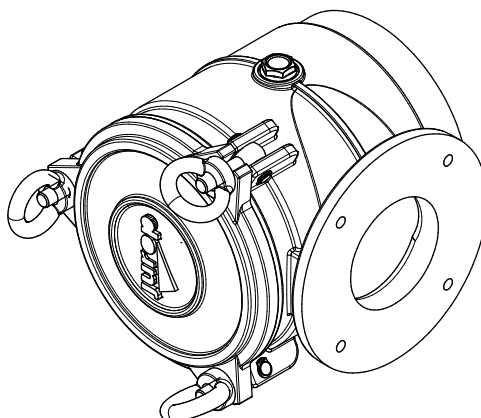


ORIGINAL INSTRUCTIONS



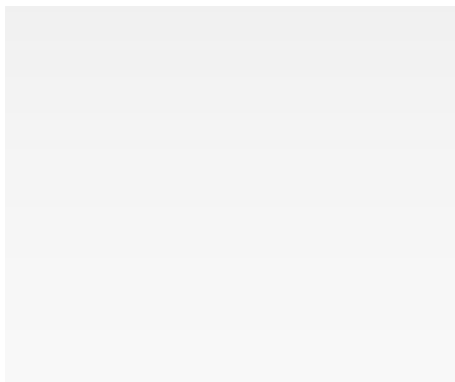
FILTER D220

FILTER D140



TECHNICAL DATA SHEET

CODE 14450 007 E0  
CODE 14450 006 E0



## 1. General warnings

- This technical data sheet contains technical information concerning water filters and the main installation and maintenance instructions.
- Complying with the instructions contained in this technical data sheet is crucial for the recognition of warranty against defective parts. Upon receiving the goods, ensure that they are intact and have not been accidentally damaged during transport. In the event parts of the accessory must be replaced, **use only genuine spare parts**.

## 2. Technical data

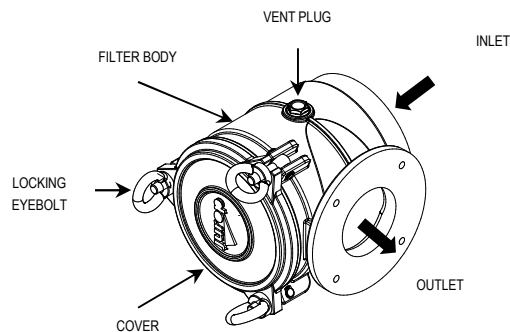
• The water filters are designed to be installed in correspondence of the intake line (in the immediate vicinity of the suction device) of water pumps. The filter prevents foreign bodies (over a certain size) from entering the pumping system. The following figure shows a schematic diagram of a water filter, highlighting its preferential flow (operation in vacuum mode).

The water filters are available in two versions:

- **WATER FILTER D140 (STAINLESS-STEEL)**, code 14450 007 E0;
- **WATER FILTER D220 (STAINLESS-STEEL)**, code 14450 006 E0.

• The filter body and cover are made of stainless steel (AISI304 1D 1.4301 EN10088) through mould casting. The filter cartridge is made of stainless steel 304.

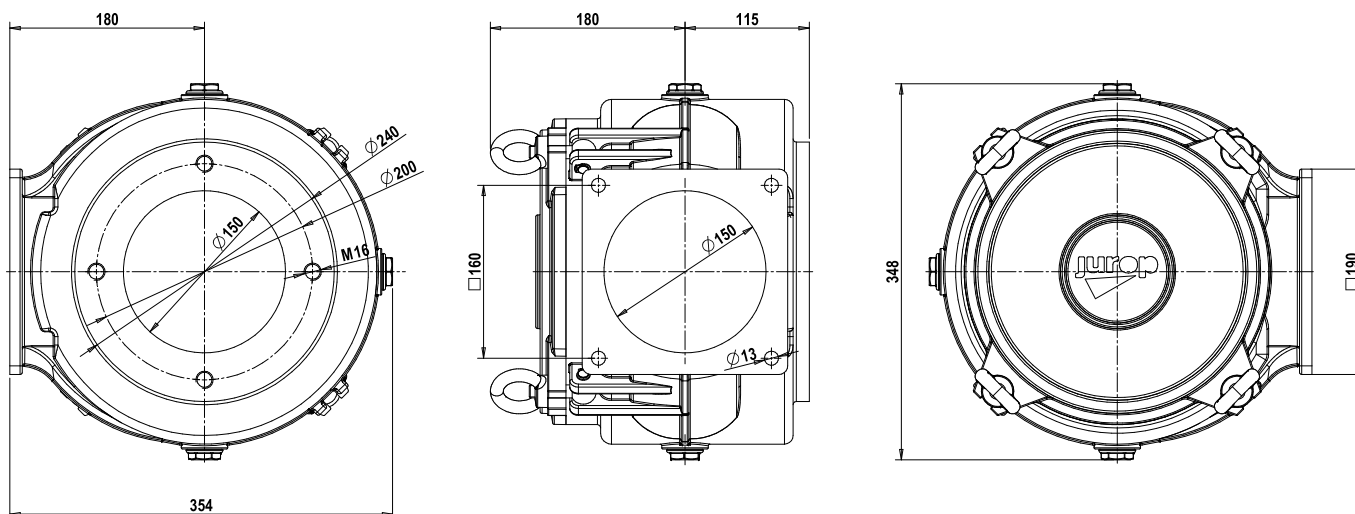
• The following table shows the main operating parameters concerning maximum operating pressures (relative), calculation pressure (relative), water flow rate, degree of filtration and weight.



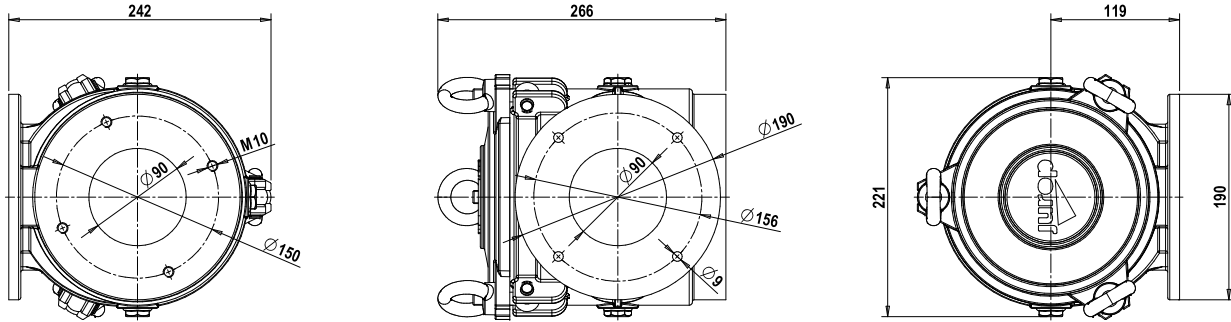
### OPERATING PARAMETERS

PARAMETER	FILTER D140	FILTER D220
Maximum operating pressure	-1 / +0,5 bar	-1 / +0,5 bar
Calculation pressure	-1 / +4 bar	-1 / +4 bar
Suitable for pumps with nominal flow up to	150 l/min (H2O)	350 l/min (H2O)
Degree of filtration	MESH 55, mesh hole $\varnothing$ 0.30 mm (a 300 $\mu$ m)	
Weight	16.0 Kg	29.0 Kg

### Overall dimensions FILTER D220 – code 14450 006 E0



**Overall dimensions FILTER D140 – code 14450 007 E0**

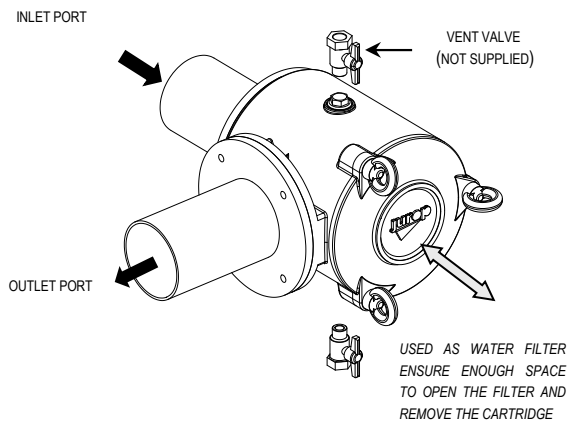


**3. Installation**

• The water filter must be installed in correspondence of the intake line of the the water pump. We recommend installing it in the proximity of the umping device with **outlet duct placed on the side**: this prevents dirt from entering inside the pump when replacing/cleaning the filter.

• We recommend connecting it to the pump using stainless steel pipes (to prevent wet and dry corrosion). The cartridge cleaning (or replacement) frequency can vary according to its use; this is why we recommend **placing it in an easily accessible location**, to simplify maintenance. Moreover, the 1/2" drain for the smaller version, the 3/4" drain for the larger version must also be easily accessible to drain the liquid inside the filter and vent the filter.

Should any valves be installed, these must ensure the tightness of the device. During the winter season, the liquid contained in the filter must be drained during downtime.



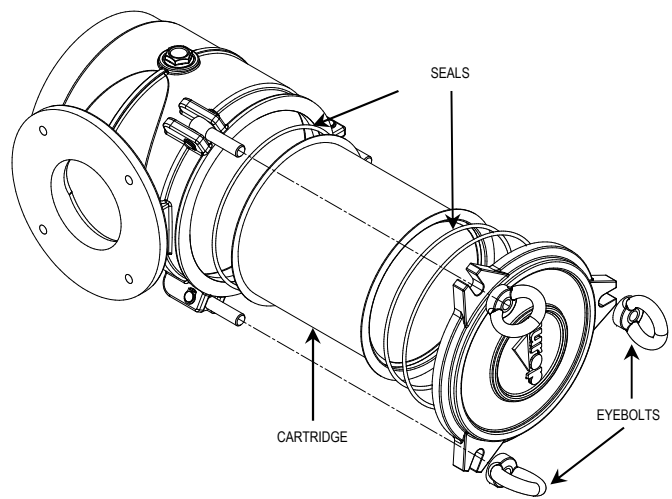
**4. Maintenance**

• Under ordinary use conditions, we recommend cleaning the filter on a weekly basis. In the event of heavy duty conditions, clean (or replace) the cartridge every time the line performance appears to be compromised. The filter must be cold cleaned.

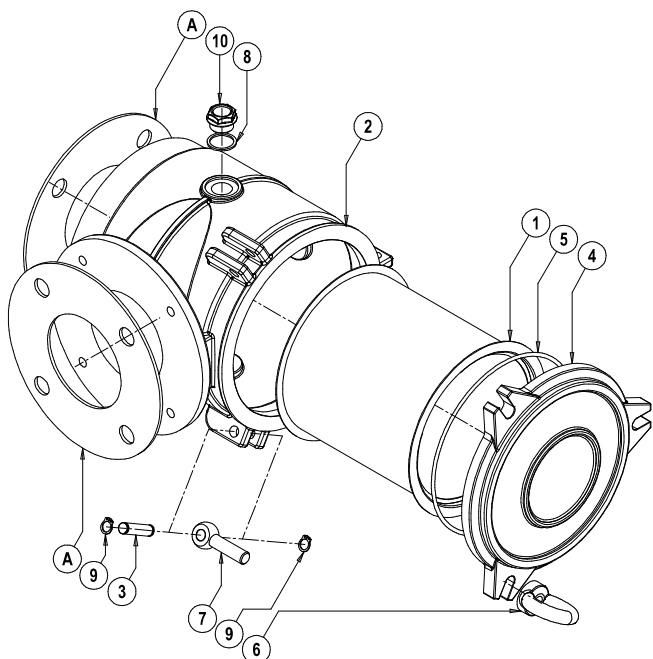
- For routine maintenance proceed as follows:
  - Loosen the three eyebolts and remove/open the cover;
  - Extract the filtering cartridge (pos. 1) and the relative seals (pos. 5 and 6), clean with detergent and blow compressed air until clean.

**Recover the liquid detergent and dispose of it in compliance with the standards in force.**

- Dry the cartridge and the entire filter well;
- Reinstall the previously removed components taking care to place the seals correctly (pos. 5-6).
- The following figure shows a schematic diagram of the maintenance procedure.
- Nella figura seguente si schematizza la procedura di manutenzione.



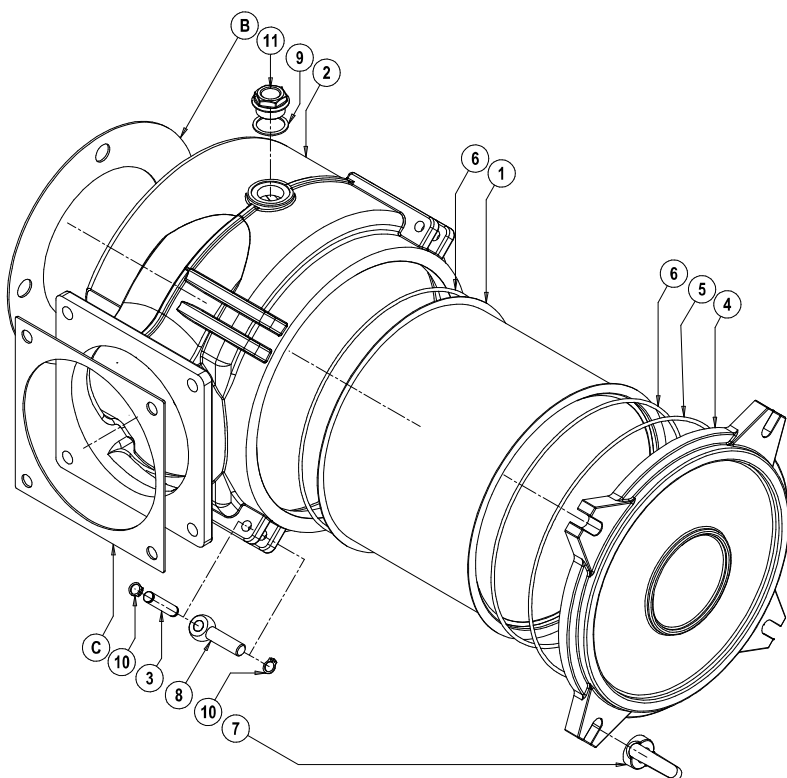
• We recommend using non-flammable detergents with passivating and protective properties.

**WATER SUCTION FILTERS**
**Water Filter D140**
**14450 007 E0**


Pos.	Code	Description	Q.ty
1	1545002900	CARTRIDGE FILTER D140	1
2	16120748E0	FILTER HOUSING	1
3	16220016E0	PIN	3
4	16400475E0	FILTER COVER	1
5	4022200245	OR 4675	1
6	4026191102	GALV. FEMALE EYELET M12	3
7	4026191207	GALV.EYELET M12X50	3
8	4026359003	WASHER 21,5X26X1,5	3
9	4026510008	SEEGER E10	6
10	4026904001	GALV. BLIND COVER G1/2"	3

Accessories available upon request :

A	16807ZSPA0	ROUND GASKET DN80 PN6	2
---	------------	-----------------------	---

**Water Filter D220**
**14450 006 E0**


Pos.	Code	Description	Q.ty
1	1545002700	CARTRIDGE FILTER D220	1
2	16120747E0	FILTER HOUSING	1
3	16220015E0	PIN	4
4	16400473E0	FILTER COVER	1
5	4022200243	OR 4975	1
6	4022200262	OR 4950	2
7	4026191102	GALV. FEMALE EYELET M12	4
8	4026191207	GALV.EYELET M12X50	4
9	4026359000	WASHER 32X26X1,5	3
10	4026510008	SEEGER E10	8
11	4026904002	GALV. BLIND COVER 3/4 ZINC.	3

Accessories available upon request :

B	1680609500	ROUND GASKET	1
C	1680609600	GASKET	1