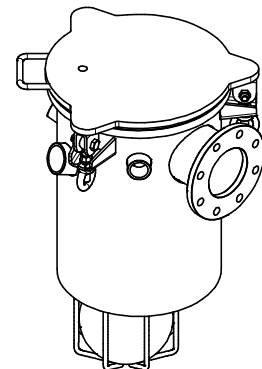
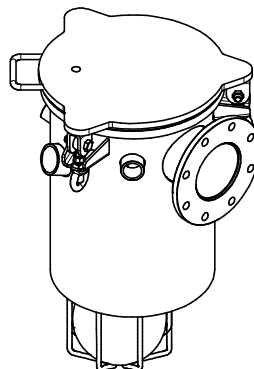
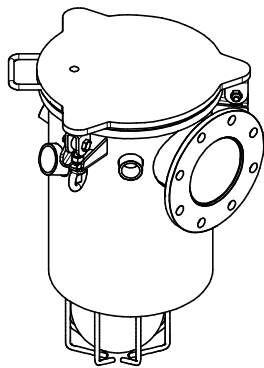
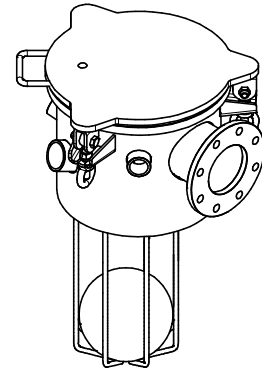
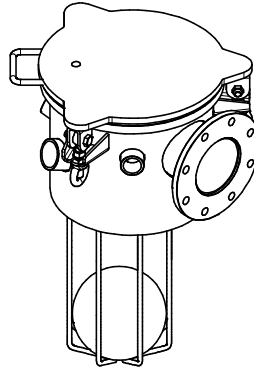
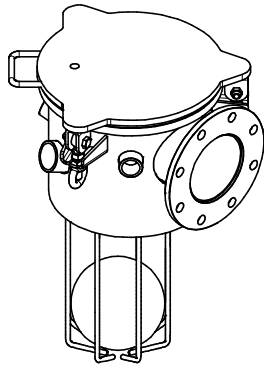


ORIGINAL INSTRUCTIONS



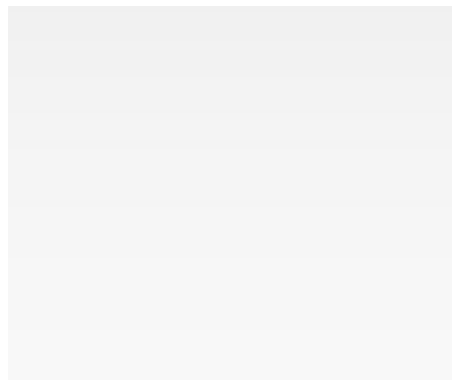
PRIMARY SHUTOFF
DN150

PRIMARY SHUTOFF
DN125

PRIMARY SHUTOFF
DN100

TECHNICAL DATA SHEET

CODE 18450 029 10 – 18450 029 20
 CODE 18450 027 10 – 18450 027 20
 CODE 18450 028 10 – 18450 028 20
 CODE 18450 026 10 – 18450 026 20
 CODE 18450 037 10 – 18450 037 20
 CODE 18450 031 10 – 18450 031 20



COMPANY WITH
QUALITY SYSTEM
CERTIFIED BY DNV GL
= ISO 9001 =

COMPANY WITH
ENVIRONMENTAL SYSTEM
CERTIFIED BY DNV GL
= ISO 14001 =

COMPANY WITH
QUALITY SYSTEM
CERTIFIED BY DNV GL
= UNI EN ISO 3834-2 =

1. General warnings

This technical data sheet contains technical information concerning the steel and stainless steel opening primary shutoffs and the main installation and maintenance instructions.

Complying with the instructions contained in this technical data sheet is crucial for the recognition of warranty against defective parts. Upon receiving the goods, ensure that they are intact and have not been accidentally damaged during transport. In the event parts of the accessory must be replaced, **use only genuine spare parts**.

2. Technical data

The opening primary shutoffs are designed to be welded to the machine, where the vacuum line starts. The primary shutoffs are equipped with an "overflow" system with a stainless steel floating ball. This system prevents the suctioned material (liquids or similar) from entering the vacuum line when the maximum level inside the tank is reached. The opening primary shutoffs are equipped with a series of side couplings that enable the connection of various types of accessories, such as vacuum breaker and safety valves, pressure gauges and vent systems and cyclone drains.

The opening primary shutoffs are available in the following three categories:

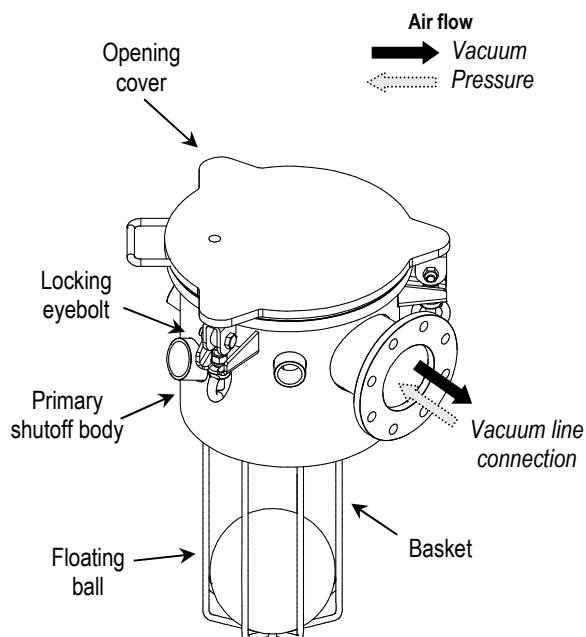
- **Opening primary shutoff DN100**, available in the versions with low ferrule and high ferrule;
- **Opening primary shutoff DN125**, available in the versions with low ferrule and high ferrule;
- **Opening primary shutoff DN150**, available in the versions with low ferrule and high ferrule.

Each of the models described above is available in the Iron and Stainless steel versions. The manufacturing materials are the following:

- Iron version made of **EN 10025-5/EN10155 S355J2WP 1.8946 mild steel** for the body (EN10025-2 S355J2 mild steel for the cover);
- Stainless steel version made of **EN10088 AISI316L 1.4404 engine turned stainless steel**.

All the versions of the primary shutoff are equipped with cover seal, NBR floating ball seal (double taper), stainless steel 316 floating ball seal and stainless steel 304L internal basket.

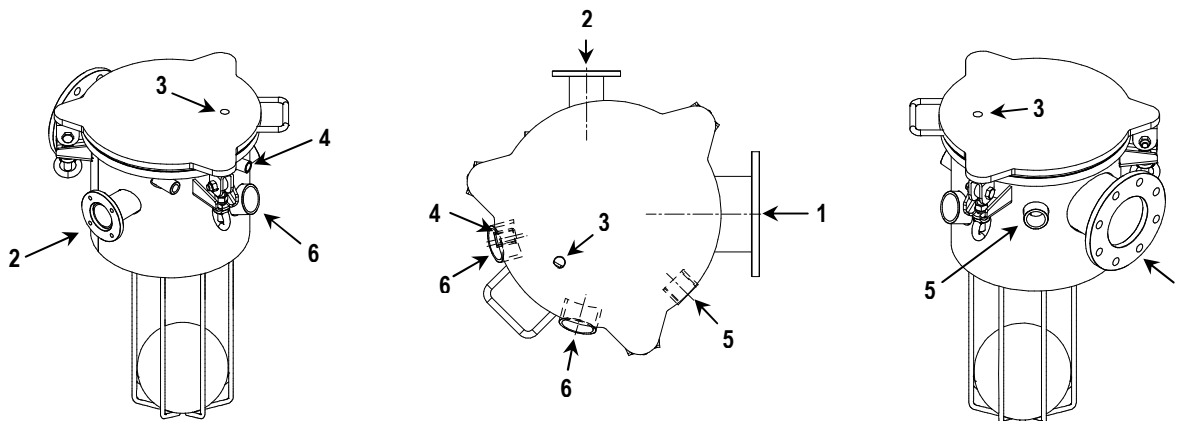
The following figure shows a schematic diagram of an opening primary shutoff, highlighting the main components.



The opening primary shutoffs are designed to operate under vacuum (with the vacuum pump suctioning from the tank) and under pressure (vacuum pump that discharges in the tank e.g., the material contained in it).

All the opening primary shutoffs are equipped with the following components:

- | | |
|--|---|
| 1. Flange for coupling to the vacuum line (DN100 – DN125 – DN150 according to the chosen version); | 4. Threaded hole for 1/2" G pressure switch connection; |
| 2. Flange for coupling to the cyclone drain DN50; | 5. Threaded hole for 1 1/4" G vent valve connection; |
| 3. Threaded hole for 1/2" G pressure gauge connection; | 6. Threaded hole for 2" G safety valve connection; |

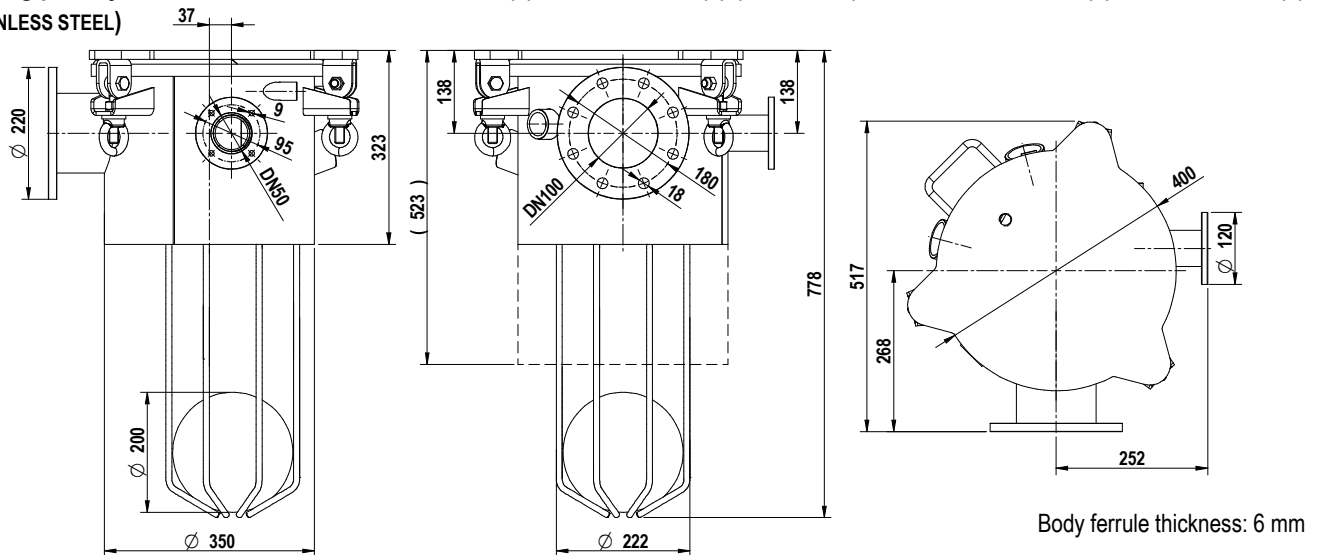


The following table shows the main features and operating parameters with reference to the material, height and ferrule of the primary shutoff, the design pressure and weight of the available opening primary shutoff valves.

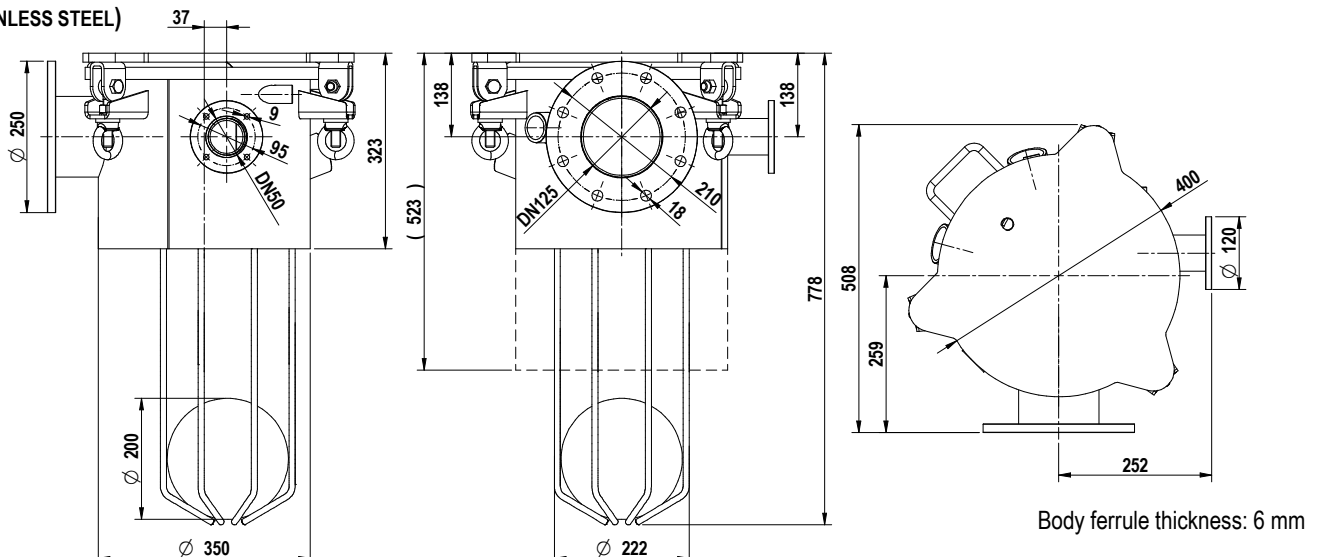
| Available versions and operating parameters | | | | | | |
|---|-----------------------------|----------------------------------|----------------|--------------|--------|--|
| Model | Code | Material | Ferrule height | Design pres. | Weight | |
| Iron primary shutoff DN 100 | 18450 029 10 - 18450 029 18 | S355J2WP mild steel | Low | -1 / +4 bar | 56 Kg | |
| Stainless steel primary shutoff DN 100 | 18450 027 10 - 18450 027 18 | AISI316L engine turned st. steel | | | | |
| Iron high primary shutoff DN 100 | 18450 029 20 - 18450 029 28 | S355J2WP mild steel | High | -1 / +4 bar | 66 Kg | |
| St. steel high primary shutoff DN 100 | 18450 027 20 - 18450 027 28 | AISI316L engine turned st. steel | | | | |
| Iron primary shutoff DN 125 | 18450 028 10 - 18450 028 18 | S355J2WP mild steel | Low | -1 / +4 bar | 57 Kg | |
| Stainless steel primary shutoff DN 125 | 18450 026 10 - 18450 026 18 | AISI316L engine turned st. steel | | | | |
| Iron high primary shutoff DN 125 | 18450 028 20 - 18450 028 28 | S355J2WP mild steel | High | -1 / +4 bar | 67 Kg | |
| St. steel high primary shutoff DN 125 | 18450 026 20 - 18450 026 28 | AISI316L engine turned st. steel | | | | |
| Iron primary shutoff DN 150 | 18450 037 10 - 18450 037 18 | S355J2WP mild steel | Low | -1 / +4 bar | 58 Kg | |
| Stainless steel primary shutoff DN 150 | 18450 031 10 - 18450 031 18 | AISI316L engine turned st. steel | | | | |
| Iron high primary shutoff DN 150 | 18450 037 20 - 18450 037 28 | S355J2WP mild steel | High | -1 / +4 bar | 68 Kg | |
| St. steel high primary shutoff DN 150 | 18450 031 20 - 18450 031 28 | AISI316L engine turned st. steel | | | | |

The opening primary shutoffs are made in compliance with the EN13445-3 and EN14025 standards concerning pressure vessels. The primary shutoffs marked with the 8 final number on the code (es. 18450 029 18), are supplied with radiographies as per ADR.

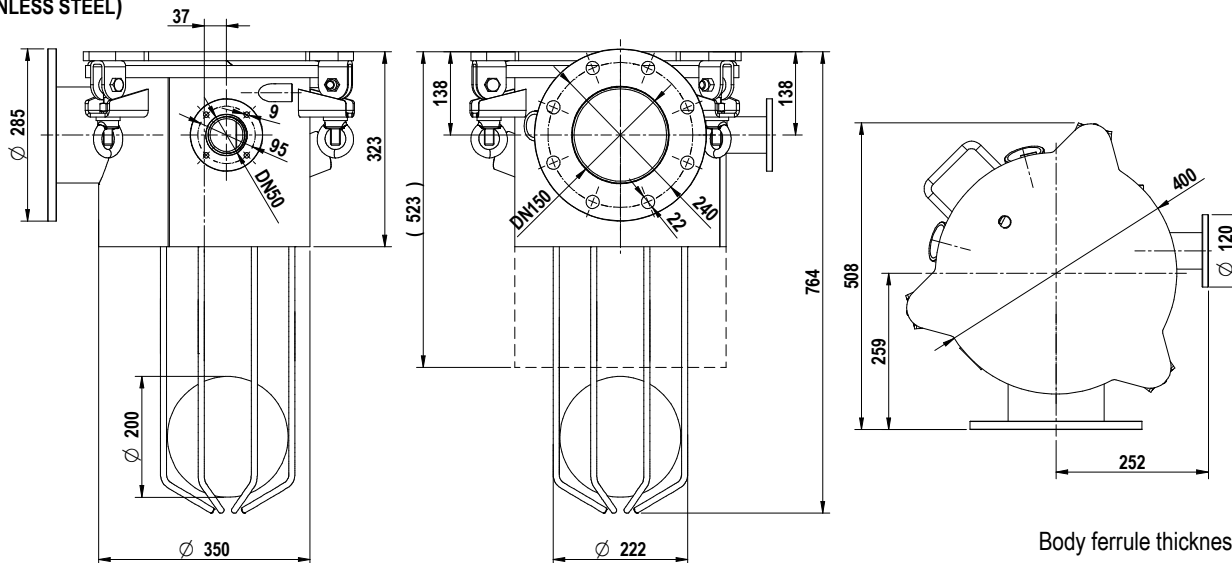
Opening primary shutoff DN100 – code 18450 029 10 (8) - 18450 029 20 (8) (MILD STEEL) – code 18450 027 10 (8) - 18450 027 20 (8) (STAINLESS STEEL)



Opening primary shutoff DN125 – code 18450 028 10 (8) – 18450 028 20 (8) (MILD STEEL) – code 18450 026 10 (8) – 18450 026 20 (8) (STAINLESS STEEL)



Opening primary shutoff DN150 – code 18450 037 10 (8) - 18450 037 20 (8) (MILD STEEL) – code 18450 031 10 (8) – 18450 031 20 (8) (STAINLESS STEEL)



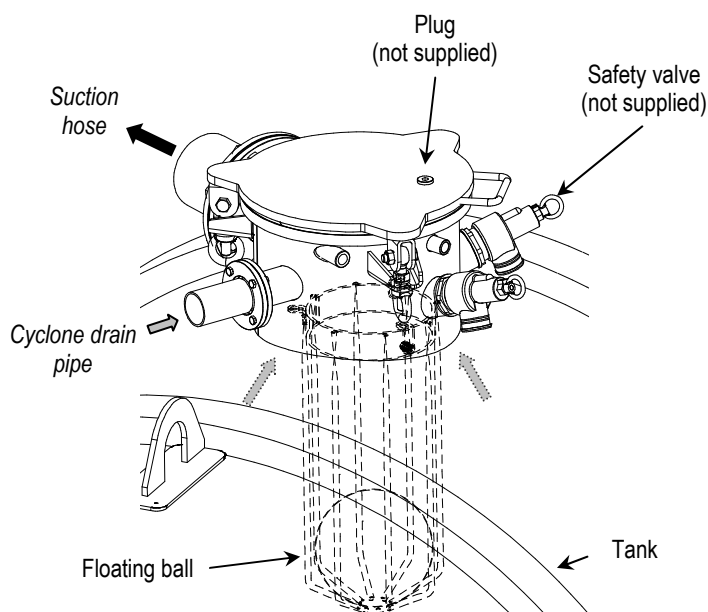
Note: the dimensions in brackets (522) refer to the primary shutoff version with high ferrule.

3. Installation

The primary shutoff must be welded on top of the tank. The figure below shows a schematic view of a correct installation, highlighting some of the possible components that can be assembled.

The primary shutoff can operate both under vacuum (as shown in the figure) and under pressure. This allows optimising the discharge of the material contained in the tank and the operation of the cyclone drain system, if any (in vacuum or in pressure mode).

The primary shutoff is equipped with threaded stumps for the installation of various types of accessories (see Chap. 2). We recommend installing a safety valve on the threaded stump in order to ensure operation within the established pressure limits.



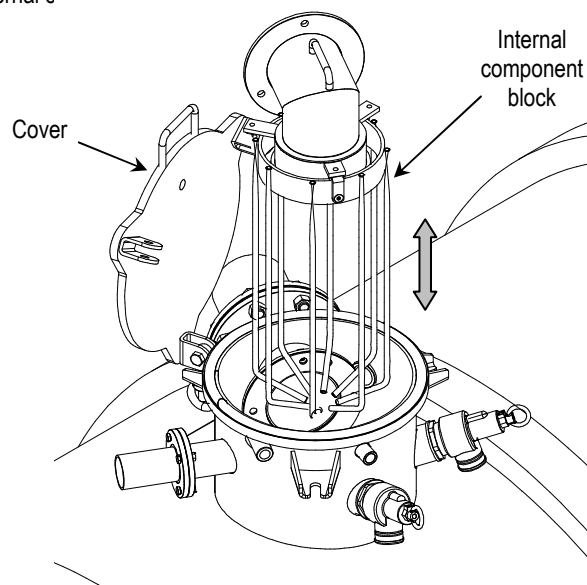
The opening primary shutoff is designed to allow removing and replacing internal components (vacuum stump, basket, floating ball and double taper seal) from the top, without having to access the inside of the tank.

If access to the vacuum stump requires climbing on top of the tank at a greater height than the ground level, provide suitable devices conforming to the standards in force.

Proceed as follows.

- Loosen the locking eyebolts positioned in the proximity of the opening handle.
- Open the cover by means of the handle.
- Remove the three vacuum stump fastening screw.
- Remove the block consisting of the vacuum stump, basket, floating ball and double taper seal.

The following table shows a schematic view of how to remove internal c



4. Maintenance

To operate correctly, the opening primary shutoff must be cleaned regularly (according to the conditions of use and the type of substances that are suctioned). Under normal conditions of use, it is sufficient to clean with a jet of high pressure water from the rear of the tank (without intervening directly on the sump on top of the tank).

Should more thorough cleaning be required (e.g. in the event the natural movement of the metal floating ball is hindered due to dirt), proceed as follows.

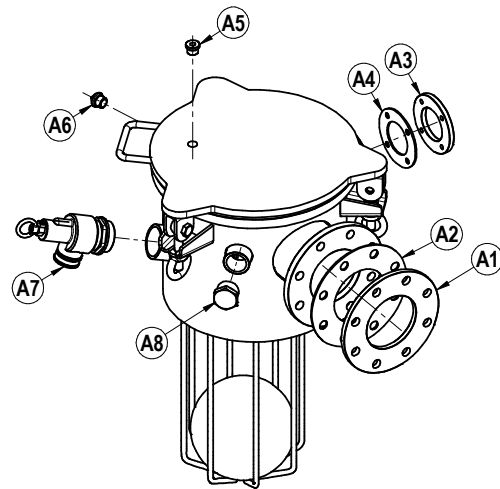
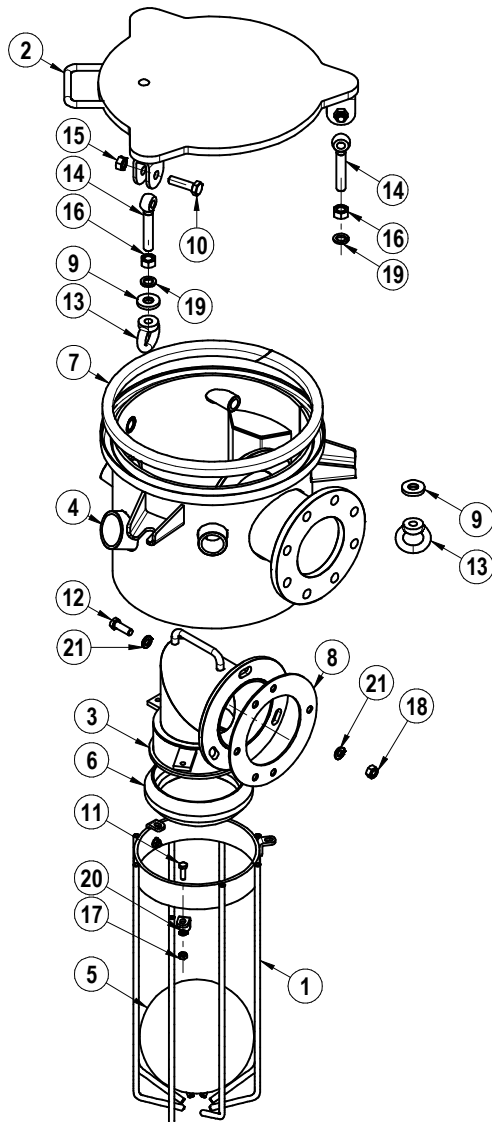
- Loosen the locking eyebolts positioned in the proximity of the opening handle.
- Open the cover by means of the handle.
- Thoroughly clean the inside of the primary shutoff using high pressure water.



Attention: ensure that the tank is under atmospheric pressure before intervening on the primary shutoff.

In the event of a pressure drop in correspondence of the primary shutoff, ensure the correct position of the cover seal. Replace if worn.

In presence of suctioned material (e.g. liquids) along the vacuum line, ensure the integrity and the correct position of the inner double taper seal. Replace if worn.

OPENING PRIMARY SHUTOFF DN100

Accessories available upon request

| Pos. | Code | Description | Qty |
|------|------------|--|-----|
| A1 | 4026713806 | FLAT FLANGE DN100 PN10 (MILD STEEL) | 1 |
| | 4026713306 | FLAT FLANGE DN100 PN10 (STAIN. STEEL) | 1 |
| A2 | 16807X7WA0 | SEAL DN100 PN10 | 1 |
| A3 | 1610020900 | CYCL. FLANGE D.120X63 TH.10 (MILD STEEL) | 1 |
| | 1610021000 | CYCL. FLANGE D.120X63 TH.10 (ST.STEEL) | 1 |
| A4 | 1680610600 | NBR FLANGE SEAL | 1 |
| A5 | 4026701653 | GALV. ½ M PLUG W/HEAD SEAL | 1 |
| A6 | 4026700904 | CAST IRON ½" M PLUG W/EDGE | 1 |
| A7 | 4027400202 | SAFETY VALVE 2" | 1 |
| A8 | 4026703705 | ST. STEEL 1"1/4 THREAD. PLUG | 1 |

These accessories do not include nuts and bolts.

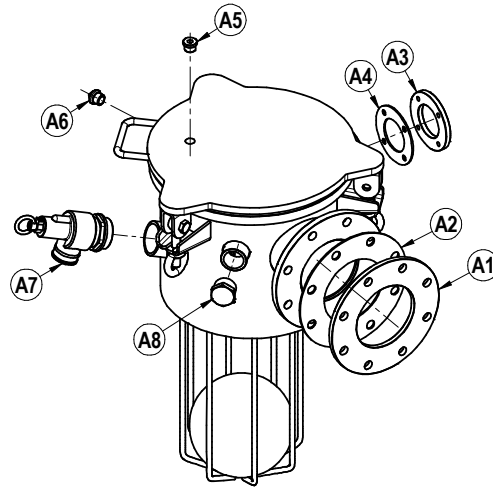
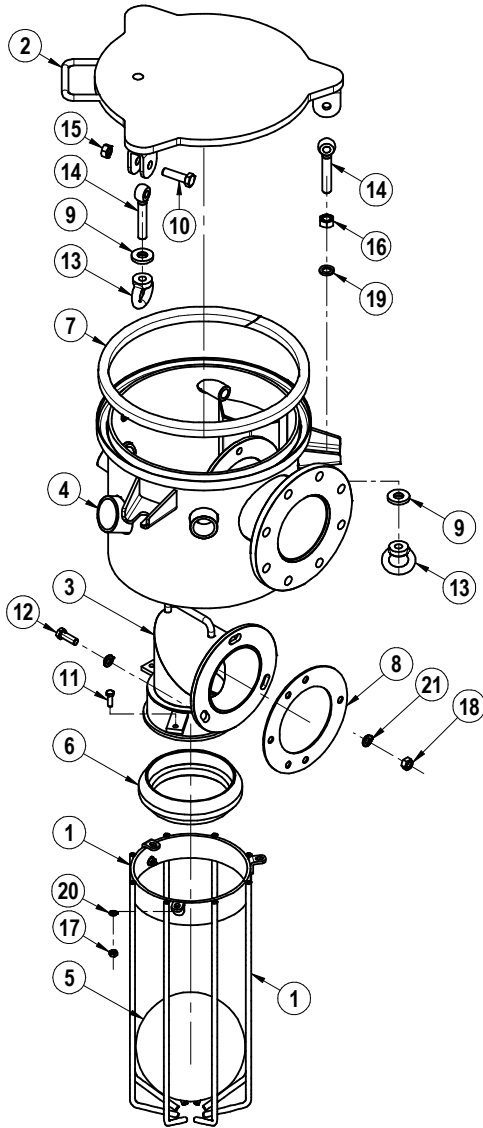
Opening primary shutoff DN100

code 18450 029 10 - 18450 029 18 (LOW – MILD STEEL) – 18450 029 20 - 18450 029 28 (HIGH- MILD STEEL) - code 18450 027 10 - 18450 027 18 (LOW - STAINLESS STEEL) – 18450 027 20 - 18450 027 28 (HIGH - STAINLESS STEEL)

| Pos. | Code | Description | Qty | Pos. | Code | Description | Qty |
|------|----------------|---|-----|------|------------|----------------------------------|-----|
| 1 | 15130ZH2B0 | ST. STEEL BASKET | 1 | 7 | 1680613000 | PRIMARY SHUTOFF SEAL | 1 |
| 2 | 1540002800 | OPEN. P. SHUTOFF COVER (MILD STEEL) | 1 | 8 | 1680614200 | PRIM. SHUTOFF SEAL 215X180X135X3 | 1 |
| | 1540002700 | OPEN. P. SHUTOFF COVER (ST. STEEL) | 1 | 9 | 1685200200 | BRASS FASTENER WASHERS D.40X17 | 3 |
| 3 | 15630XILA0 | REMOVABLE VACUUM STUMP (MILD STEEL) | 1 | 10 | 4026103112 | GALV. HEX SCREW M14X50 | 3 |
| | 1563026700 | REMOVABLE VACUUM STUMP (ST. STEEL) | 1 | 11 | 4026150408 | ST. STEEL HEX SCREW M8X25 | 3 |
| 4 | 1587006910 | LOW FER. DN100 P. SHUTOFF (MILD STEEL) | 1 | 12 | 4026150609 | ST. STEEL HEX SCREW M12X35 | 3 |
| | 1587006918 (*) | LOW FER. DN100 P. SHUTOFF (MILD STEEL) | 1 | 13 | 4026191103 | GALV. FEMALE EYEBOLT M16 | 3 |
| | 1587006810 | LOW FER. DN100 P. SHUTOFF (ST. STEEL) | 1 | 14 | 4026191206 | GALV.EYELET M16X100 | 3 |
| | 1587006818 (*) | LOW FER. DN100 P. SHUTOFF (ST. STEEL) | 1 | 15 | 4026308008 | GALV. HEX NUT M14 | 3 |
| | 1587006920 | HIGH FER. DN100 P. SHUTOFF (MILD STEEL) | 1 | 16 | 4026308009 | GALV. HEX NUT M16 | 1 |
| | 1587006928 (*) | HIGH FER. DN100 P. SHUTOFF (MILD STEEL) | 1 | 17 | 4026310007 | ST. STEEL HEX NUT M8 | 3 |
| | 1587006820 | HIGH FER. DN100 P. SHUTOFF (ST. STEEL) | 1 | 18 | 4026310509 | ST. STEEL SELF-LOCK. HEX NUT M12 | 3 |
| | 1587006828 (*) | HIGH FER. DN100 P. SHUTOFF (ST. STEEL) | 1 | 19 | 4026350709 | GALV. FLAT GROWER WASHER M12 | 1 |
| 5 | 1592000100 | ST. STEEL FLOATING BALL D.200 | 1 | 20 | 4026350805 | ST. STEEL GROWER WASHER M8 | 3 |
| 6 | 1680605200 | DOUBLE TAPER SEAL D.200 | 1 | 21 | 4026350807 | ST. STEEL GROWER WASHER M12 | 6 |

(*) = radiographed versions as per ADR.

OPENING PRIMARY SHUTOFF DN125



Accessories available upon request

| Pos. | Code | Description | Qty |
|------|------------|--|-----|
| A1 | 4026713807 | FLAT FLANGE DN125 PN10 (MILD STEEL) | 1 |
| | 4026713307 | FLAT FLANGE DN125 PN10 (ST. STEEL) | 1 |
| A2 | 16807X7SA0 | SEAL DN125 PN10 | 1 |
| A3 | 1610020900 | CYCL. FLANGE D.120X63 TH.10 (MILD STEEL) | 1 |
| | 1610021000 | CYCL. FLANGE D.120X63 TH.10 (ST.STEEL) | 1 |
| A4 | 1680610600 | NBR FLANGE SEAL | 1 |
| A5 | 4026701653 | GALV. M 1/2 PLUG W/HEAD SEAL | 1 |
| A6 | 4026700904 | CAST IRON PLUG W/EDGE M1/2" | 1 |
| A7 | 4027400202 | SAFETY VALVE W/2" HOSE CONNECTION | 1 |
| A8 | 4026703705 | ST. STEEL M 1"1/4 THREAD. PLUG | 1 |

These accessories do not include nuts and bolts.

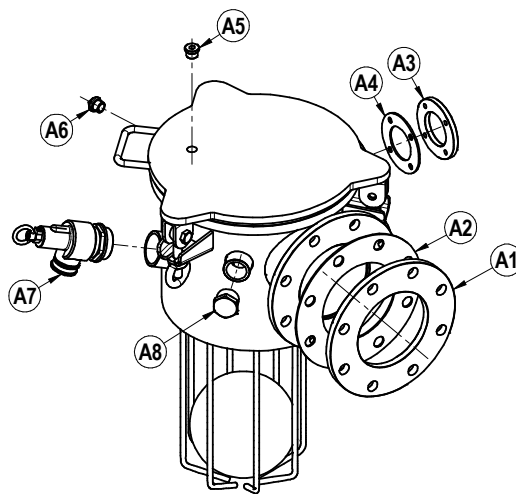
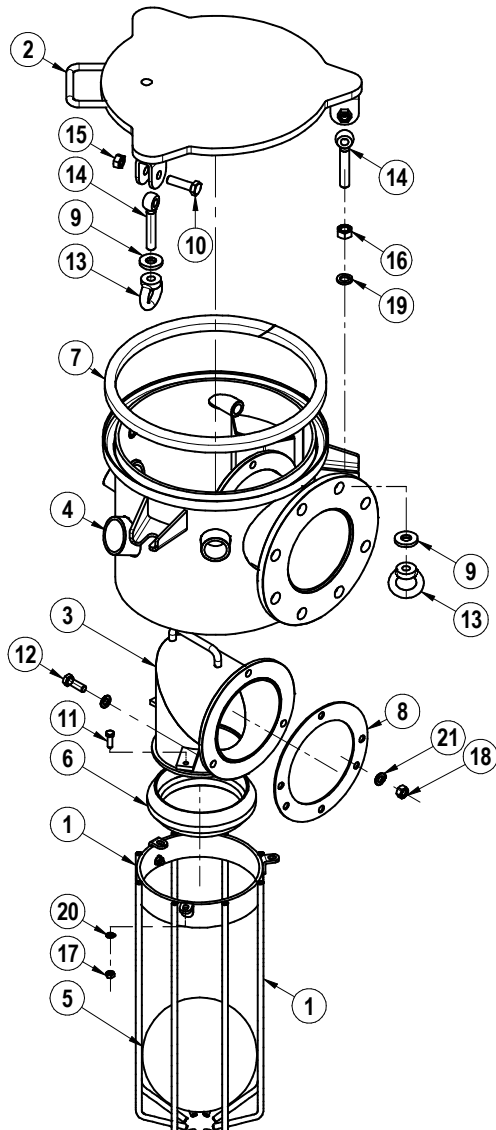
Opening primary shutoff DN125

code 18450 028 10 - 18450 028 18 (LOW - MILD STEEL) - 18450 028 20 - 18450 028 28 (HIGH - MILD STEEL) - code 18450 026 10 - 18450 026 18 (LOW - STAINLESS STEEL) - 18450 026 20 - 18450 026 28 (HIGH - STAINLESS STEEL)

| Pos. | Code | Description | Qty | Pos. | Code | Description | Qty |
|------|----------------|--|-----|------|------------|----------------------------------|-----|
| 1 | 15130ZH2B0 | ST. STEEL BASKET | 1 | 7 | 1680613000 | PRIMARY SHUTOFF SEAL | 1 |
| 2 | 1540002800 | OPEN. PR. SHUTOFF COVER (MILD STEEL) | 1 | 8 | 1680614200 | PRIM. SHUTOFF SEAL 215X180X135X3 | 1 |
| | 1540002700 | OPEN. PR. SHUTOFF COVER (ST. STEEL) | 1 | 9 | 1685200200 | BRASS FASTENER WASHERS D.40X17 | 3 |
| 3 | 15630XILA0 | REMOVABLE VACUUM STUMP (MILD STEEL) | 1 | 10 | 4026103112 | GALV. HEX SCREW 8.8 M14X60 | 3 |
| | 1563026700 | REMOVABLE VACUUM STUMP (ST. STEEL) | 1 | 11 | 4026150408 | ST. STEEL HEX SCREW M8X25 | 3 |
| 4 | 1587005710 | LOW FER. PR. SHUTOFF DN125 (MILD STEEL) | 1 | 12 | 4026150609 | ST. STEEL HEX SCREW M12X35 | 3 |
| | 1587005718 (*) | LOW FER. PR. SHUTOFF DN125 (MILD STEEL) | 1 | 13 | 4026191103 | GALV. FEMALE EYEBOLT M16 | 3 |
| | 1587005610 | LOW FER. PR. SHUTOFF DN125 (ST. STEEL) | 1 | 14 | 4026191206 | GALV.EYELET M16X100 | 3 |
| | 1587005618 (*) | LOW FER. PR. SHUTOFF DN125 (ST. STEEL) | 1 | 15 | 4026308008 | SELF-LOCK.HEX NUT M14 | 3 |
| | 1587005720 | HIGH FER. PR. SHUTOFF DN125 (MILD STEEL) | 1 | 16 | 4026308009 | GALV. HEX NUT M16 | 1 |
| | 1587005728 (*) | HIGH FER. PR. SHUTOFF DN125 (MILD STEEL) | 1 | 17 | 4026310007 | ST. STEEL HEX NUT M8 | 3 |
| | 1587005620 | HIGH FER. PR. SHUTOFF DN125 (ST. STEEL) | 1 | 18 | 4026310009 | ST. STEEL HEX NUT M12 | 3 |
| | 1587005628 (*) | HIGH FER. PR. SHUTOFF DN125 (ST. STEEL) | 1 | 19 | 4026350709 | GALV. FLAT GROWER WASHER M12 | 1 |
| 5 | 1592000100 | ST. STEEL FLOATING BALL D.200 | 1 | 20 | 4026350805 | ST. STEEL GROWER WASHER M8 | 3 |
| 6 | 1680605200 | DOUBLE TAPER SEAL D.200 | 1 | 21 | 4026350807 | ST. STEEL GROWER WASHER M12 | 6 |

(*) = radiographed versions as per ADR.

OPENING PRIMARY SHUTOFF DN150



Accessories available upon request

| Pos. | Code | Description | Qty |
|------|------------|--|-----|
| A1 | 4026713411 | FLAT FLANGE DN150 PN10 (MILD STEEL) | 1 |
| | 4026713308 | FLAT FLANGE DN150 PN10 (ST. STEEL) | 1 |
| A2 | 16807X97A0 | SEAL DN150 PN10 | 1 |
| A3 | 1610020900 | CYCL. FLANGE D.120X63 TH.10 (MILD STEEL) | 1 |
| | 1610021000 | CYCL. FLANGE D.120X63 TH.10 (ST.STEEL) | 1 |
| A4 | 1680610600 | NBR FLANGE SEAL | 1 |
| A5 | 4026701653 | GALV. M 1/2 PLUG W/HEAD SEAL | 1 |
| A6 | 4026700904 | CAST IRON PLUG W/WEDGE M1/2" | 1 |
| A7 | 4027400202 | SAFETY VALVE 2" | 1 |
| A8 | 4026703705 | ST. STEEL 1"1/4 THREAD. PLUG | 1 |

These accessories do not include nuts and bolts.

Opening primary shutoff DN150

code 18450 037 10 - 18450 037 18 (LOW - MILD STEEL) – 18450 037 20 - 18450 037 28 (HIGH - MILD STEEL) – code 18450 031 10 -18450 031 18 (LOW - STAINLESS STEEL) – 18450 031 20 -18450 031 28 (HIGH - STAINLESS STEEL)

| Pos. | Code | Description | Qty | Pos. | Code | Description | Qty |
|------|----------------|---|-----|------|------------|--------------------------------|-----|
| 1 | 15130ZH2B0 | ST. STEEL BASKET | 1 | 7 | 1680613000 | PRIMARY SHUTOFF SEAL | 1 |
| 2 | 1540002800 | OPEN. PR. SHUTOFF COVER (MILD STEEL) | 1 | 8 | 1680613700 | OPEN. PRIMARY SHUTOFF SEAL | 1 |
| | 1540002700 | OPEN. PR. SHUTOFF COVER (ST. STEEL) | 1 | 9 | 1685200200 | BRASS FASTENER WASHERS D.40X17 | 3 |
| 3 | 1563025400 | REMOVABLE VACUUM STUMP (MILD STEEL) | 1 | 10 | 4026103112 | GALV. HEX SCREW M14X50 | 3 |
| | 1563025900 | REMOVABLE VACUUM STUMP (ST. STEEL) | 1 | 11 | 4026150408 | ST. STEEL SCREW M8X25 | 3 |
| 4 | 1587008010 | LOW FER. PR. SHUTOFF (MILD STEEL) | 1 | 12 | 4026150609 | ST. STEEL SCREW M12X35 | 3 |
| | 1587008018 (*) | LOW FER. PR. SHUTOFF (MILD STEEL) | 1 | 13 | 4026191103 | GALV. FEMALE EYEBOLT M16 | 3 |
| | 1587007210 | LOW FER. PR. SHUTOFF DN150 (ST. STEEL) | 1 | 14 | 4026191206 | GALV.EYELET M16X100 | 3 |
| | 1587007218 (*) | LOW FER. PR. SHUTOFF DN150 (ST. STEEL) | 1 | 15 | 4026308008 | GALV. HEX NUT M14 | 3 |
| | 1587008020 | HIGH FER. PR. SHUTOFF (MILD STEEL) | 1 | 16 | 4026308009 | GALV. HEX NUT M16 | 1 |
| | 1587008028 (*) | HIGH FER. PR. SHUTOFF (MILD STEEL) | 1 | 17 | 4026310007 | ST. STEEL HEX NUT M8 | 3 |
| | 1587007220 | HIGH FER. PR. SHUTOFF DN150 (ST. STEEL) | 1 | 18 | 4026310009 | ST. STEEL HEX NUT M12 | 3 |
| | 158700722* (*) | HIGH FER. PR. SHUTOFF DN150 (ST. STEEL) | 1 | 19 | 4026350709 | GALV. FLAT GROWER WASHER M12 | 1 |
| 5 | 1592000100 | ST. STEEL FLOATING BALL D.200 | 1 | 20 | 4026350805 | ST. STEEL GR. WASHER M8 | 3 |
| 6 | 1680605200 | DOUBLE TAPER SEAL D.200 | 1 | 21 | 4026350807 | ST. STEEL GR. WASHER M12 | 6 |

(*) = radiographed versions as per ADR.